



## ACTIVATION OF CONTRA FLOW BETWEEN BANDAR SAUJANA PUTRA – PUTRAJAYA ON THE ELITE HIGHWAY FOR BRIDGE BEAM LAUNCHING WORKS

**Petaling Jaya, 24 July 2024:-** PLUS Malaysia Berhad (PLUS) wishes to inform that a contra flow will be activated between Bandar Saujana Putra and Putrajaya at KM18.0 to KM19.5 on the North-South Expressway Central Link (ELITE) on 28 July to 1 August 2025, from 11.00 pm to 5.00 am for beam launching works by the appointed contractor.

*(Please refer to the attached infographic)*

Highway users are encouraged to plan their journeys during this period. They are also reminded to obey to all traffic signages and instructions issued by PLUS personnel when passing through the affected areas.

For the latest traffic updates, highway users can refer to the PLUS App, PUTRI Virtual Assistant, X @plustrafik or Electronic Signages (VMS) at selected locations. Highway users can also contact the PLUSLine at 1800-88-0000 for emergency assistance.

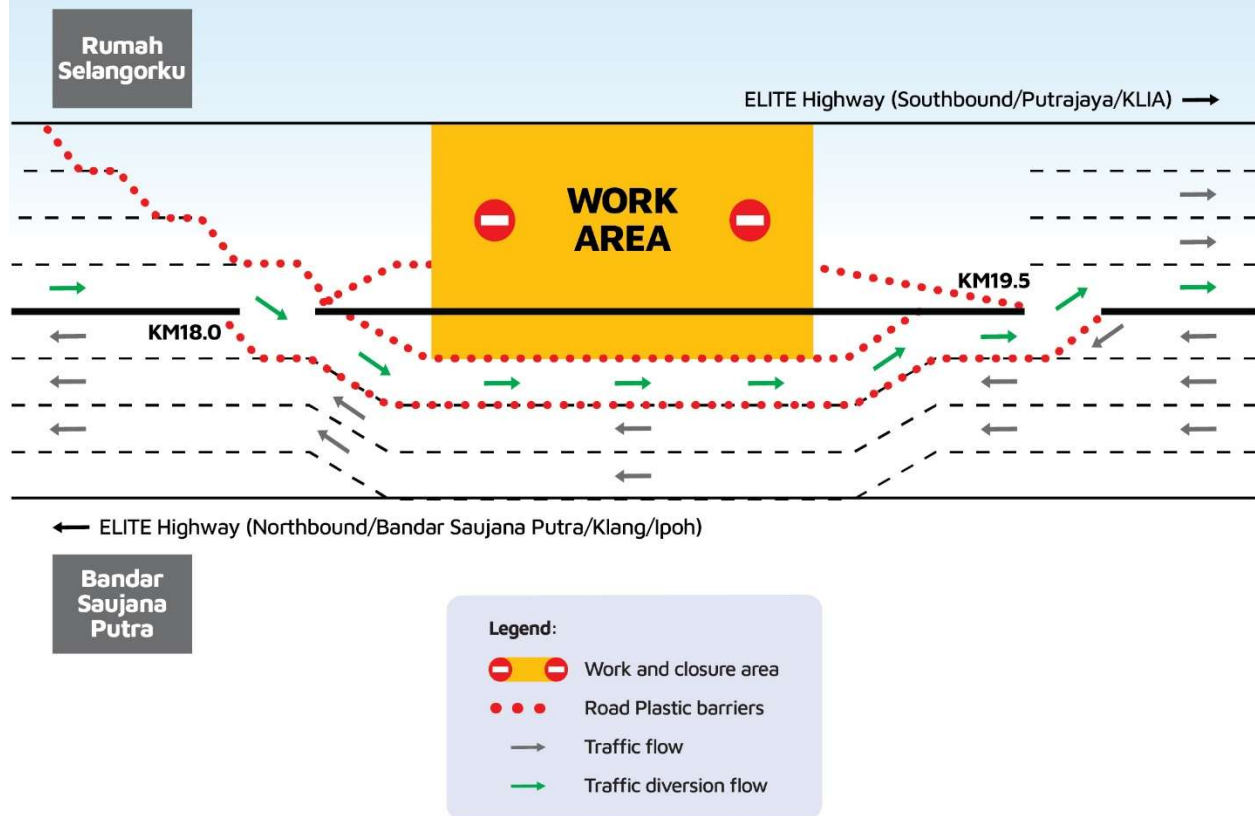
-END-

### MEDIA CONTACT:

<b>Mashitah Mohd Arshad</b> Acting Head Corporate Communications PLUS Malaysia Berhad Mobile: 013-209 7092 Email: mashitah@plus.com.my	<b>Rofina Adam</b> Manager Corporate Communications PLUS Malaysia Berhad Mobile: 012-657 4452 Email: rofina@plus.com.my
---	--

## ACTIVATION OF CONTRA FLOW AT BANDAR SAUJANA PUTRA-PUTRAJAYA STRETCH, KM18.0-KM19.5 ON ELITE HIGHWAY FOR BRIDGE BEAM LAUNCHING WORKS

**Scheduled on 28 July to 1 August 2025, from 11:00 pm to 5:00 am**



Please obey with all traffic signages and instructions when passing through the affected areas.

Follow us on social media



[www.plus.com.my](http://www.plus.com.my) [PLUSLine 1800-88-0000](tel:1800-88-0000) [PLUS App](#) [PUTRI](#)