

## **MAINTENANCE WORKS ON NKVE & ELITE HIGHWAY**

### **Highway users are advised to plan their journeys**

**Petaling Jaya, 19 July 2025:-** PLUS Malaysia Berhad (PLUS) through a third-party contractor will be carried out maintenance works on the New Klang Valley Expressway (NKVE) and the North-South Expressway Central Link (ELITE) to ensure comfort and safety of highway users.

As such, these are the works to be conducted on the highways:-

#### **1. On the New Klang Valley Expressway (NKVE) - Please refer to Infographic Attachment A**

<b>Scheduled Date &amp; Time</b>	<b>Location on the highway</b>	<b>Works to be conducted</b>
19 July to 14 October 2025 (24-hours)	Damansara-Bukit Lanjan stretch, KM19.30 – KM20.00 (Both Bounds) on the NKVE Highway	Drainage system maintenance.  Right lane closure (Both Bounds) and activation of lane diversion at the location.

#### **2. On the North-South Expressway Central Link (ELITE) - Please refer to Infographic Attachment B)**

<b>Scheduled Date &amp; Time</b>	<b>Location on the highway</b>	<b>Works to be conducted</b>
21 July to 25 July 2025 (From 11.00 pm to 5.00 am)	Putrajaya-Bandar Saujana Putra stretch, KM19.5 - KM18.0 on the ELITE Highway	Beam launching works.  Contra Flow will be activated at the location.

Highway users are encouraged to plan their journeys during this period. They are also reminded to obey to all traffic signages and given by PLUS personnel when passing through the affected areas.

For the latest traffic updates, highway users can refer to the PLUS App, PUTRI Virtual Assistant, X @plustrafik or Electronic Signages (VMS) at selected locations. Highway users can also contact the PLUSLine at 1800-88-0000 for emergency assistance.

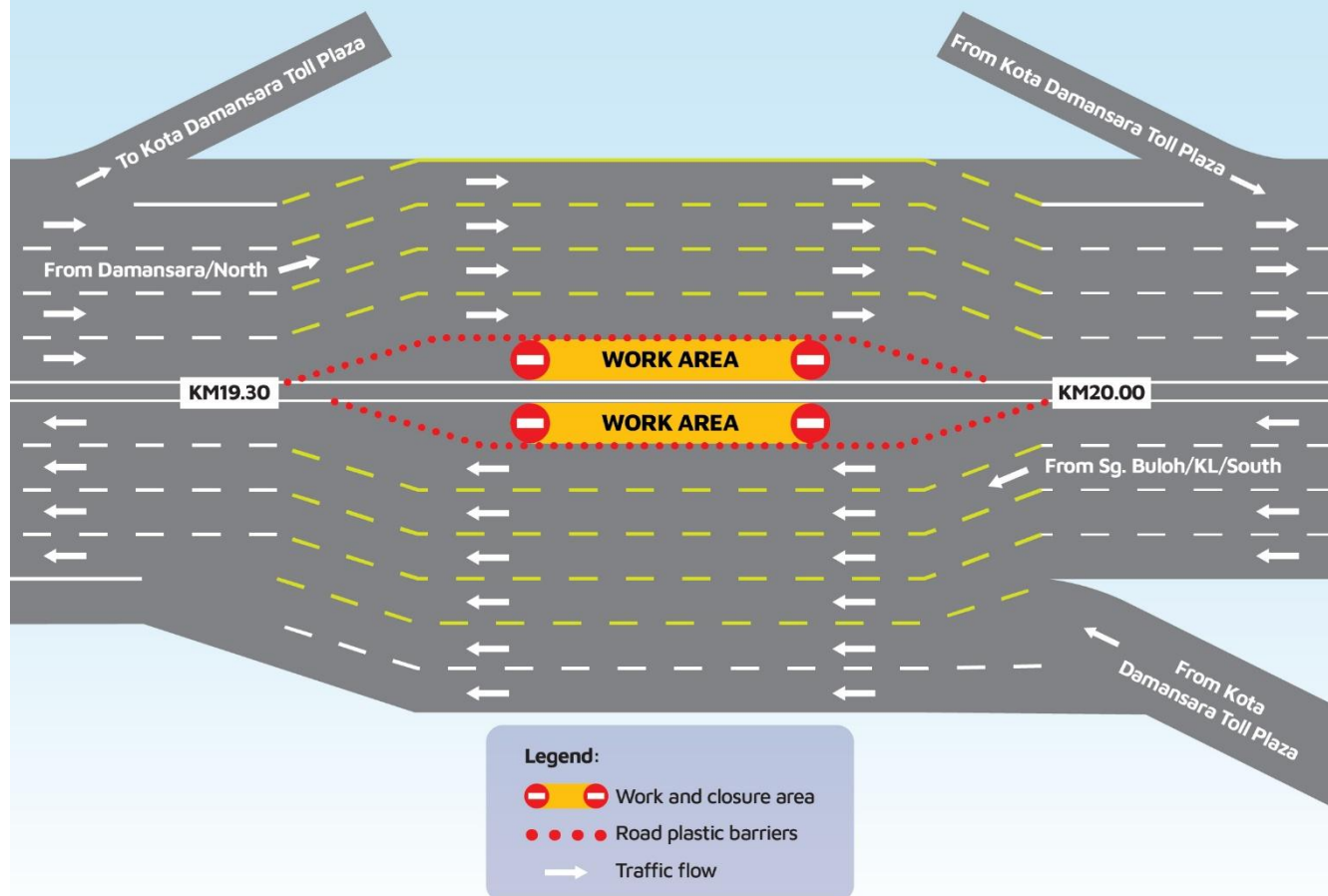
-END-

#### **MEDIA CONTACT:**

<b>Mashitah Mohd Arshad</b> Acting Head Corporate Communications PLUS Malaysia Berhad Mobile: 013-209 7092 Email: mashitah@plus.com.my	<b>Rofina Adam</b> Manager Corporate Communications PLUS Malaysia Berhad Mobile: 012-657 4452 Email: rofina@plus.com.my
---	--

# TEMPORARY RIGHT LANE CLOSURE AT DAMANSARA-BUKIT LANJAN STRETCH, KM19.30-KM20.00 (BOTH BOUNDS) AND THE ACTIVATION OF A ROAD DIVERSION ON NKVE HIGHWAY FOR MAINTENANCE WORKS

Scheduled on 19 July to 14 October 2025



Please obey with all traffic signages and instructions when passing through the affected areas.

Follow us on social media



[www.plus.com.my](http://www.plus.com.my)

PLUSLine 1800-88-0000

PLUS App

PUTRI

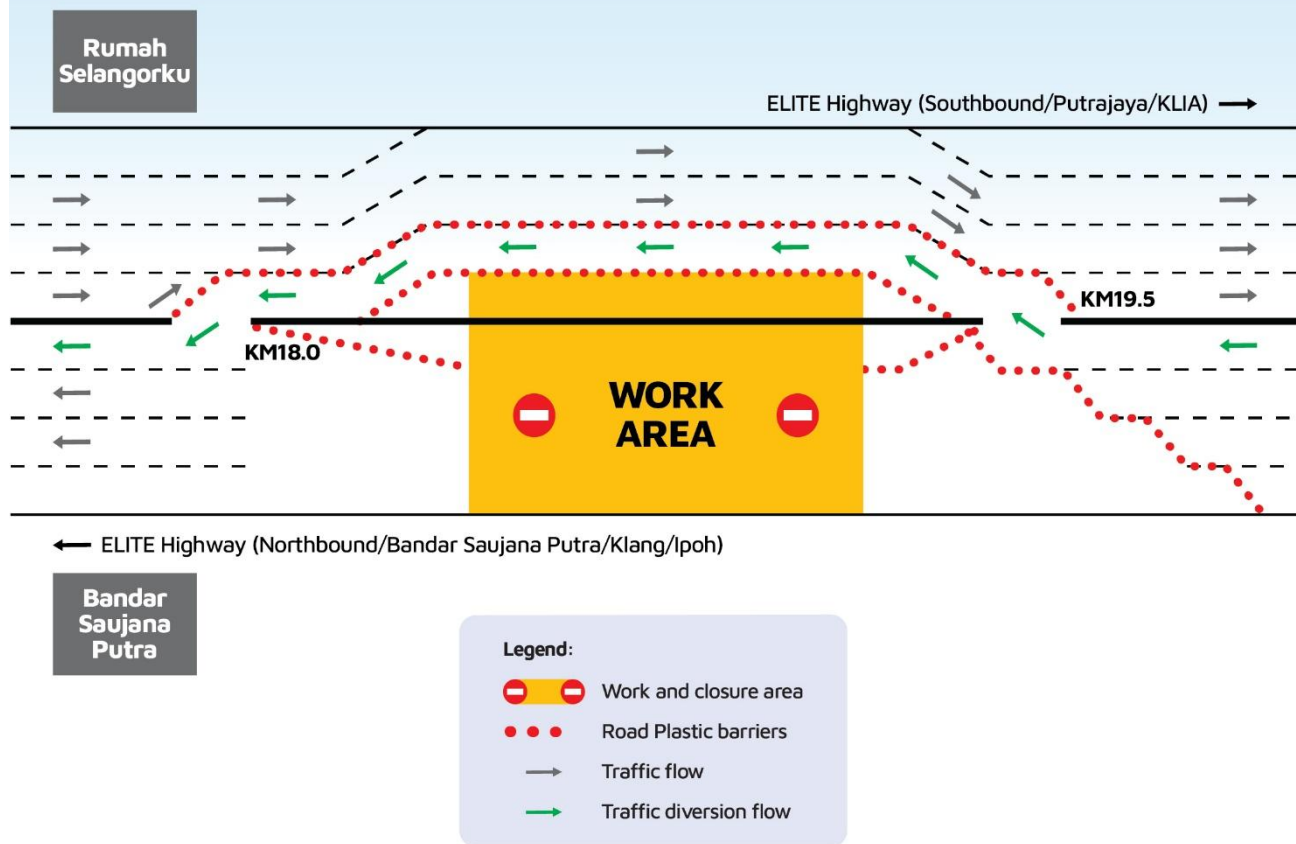


A member of UEM

(Infographic Attachment B)

## ACTIVATION OF CONTRA FLOW AT PUTRAJAYA-BANDAR SAUJANA PUTRA STRETCH, KM19.5-KM18.0 ON ELITE HIGHWAY FOR BRIDGE BEAM LAUNCHING WORKS

**Scheduled on 21 July to 25 July 2025, from 11:00 pm to 5:00 am**



Please obey with all traffic signages and instructions when passing through the affected areas.

Follow us on social media



[www.plus.com.my](http://www.plus.com.my)

PLUSLine 1800-88-0000

PLUS App

PUTRI



A member of UEM