

**BILLBOARD GANTRY STRUCTURE INSTALLATION WORKS
AT JALAN DUTA AND BUKIT LANJAN STRETCH
AT KM25.4 – KM25.7 (BOTH BOUNDS) AT THE NKVE HIGHWAY**

Petaling Jaya, 6 August 2025: PLUS Malaysia Berhad (PLUS) wishes to inform that the billboard gantry beam structure installation works across the highway by the appointed third party contractor will be carried out between the Jalan Duta and Bukit Lanjan stretch at KM25.4 and KM25.7 (Both Bounds) on the New Klang Valley Expressway (NKVE), on 7 August to 8 August 2025 from 11.00 pm until 5.00 am.

Therefore, please anticipate minor traffic disruptions at the affected area throughout the construction period.

(Please refer to the attached infographic for details)

Highway users are encouraged to plan their journeys during this period. They are also reminded to obey all traffic signages and follow instructions given by PLUS personnel when passing through the affected areas.

For the latest traffic updates, highway users can refer to the PLUS App, PUTRI Virtual Assistant, X @plustrafik or Electronic Signages (VMS) at selected locations. Highway users can also contact the PLUSLine at 1800-88-0000 for emergency assistance.

-END-

MEDIA CONTACT:

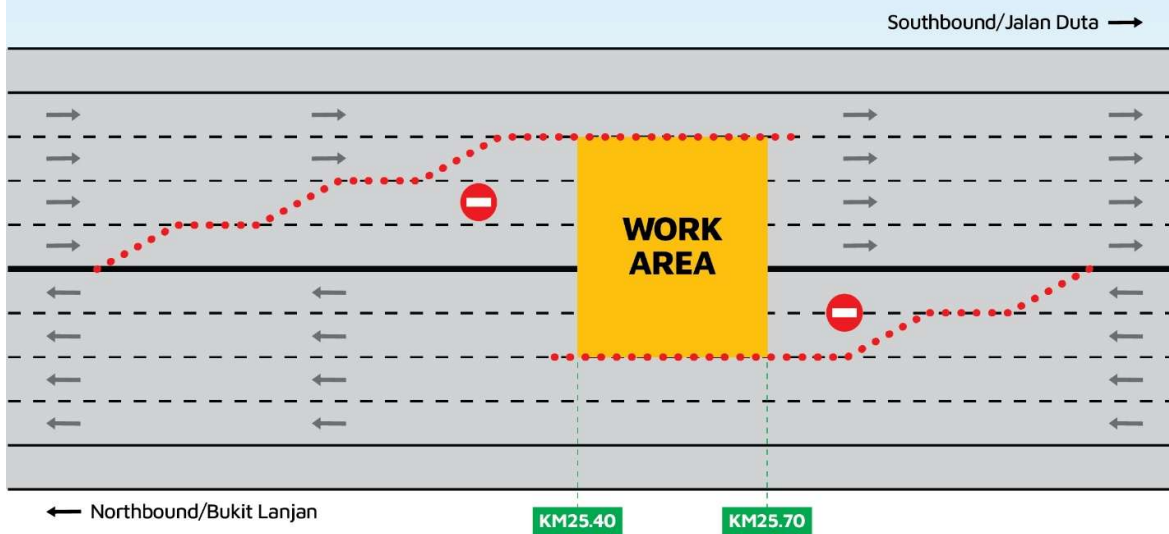
Mashitah Mohd Arshad Acting Head Corporate Communications PLUS Malaysia Berhad Mobile: 013-209 7092 Email: mashitah@plus.com.my	Rofina Adam Manager Corporate Communications PLUS Malaysia Berhad Mobile: 012-657 4452 Email: rofina@plus.com.my
---	--

ATTACHMENT

BILLBOARD GANTRY STRUCTURE INSTALLATION WORKS AT JALAN DUTA AND BUKIT LANJAN STRETCH AT KM25.4-KM25.7 (BOTH BOUNDS) AT NKVE HIGHWAY

**Scheduled on 7 August to 8 August 2025
from 11:00 pm to 5:00 am**

Kindly anticipate minor traffic disruptions at the affected area
throughout the construction period



Legend:

-  Work area
-  Road plastic barriers
-  Traffic flow

Please obey all traffic signages and instructions when passing through the affected areas.

Follow us on social media



www.plus.com.my

PLUSLine 1800-88-0000

PLUS App

PUTRI