



KENYATAAN MEDIA

FOR IMMEDIATE RELEASE

19 AUGUST 2025

LANE DIVERSION AT KULAI TOLL PLAZA ENTRY LANE: PLUS TO IMPLEMENT PAVEMENT REHABILITATION WORKS FOR MORE COMFORT

Petaling Jaya, 19 August 2025:- As a part of the continuous effort to provide a more comfortable experience for highway users, PLUS Malaysia Berhad (PLUS) will activate lane diversion at one of the entry lanes at Kulai Toll Plaza at KM283.80, North-South Expressway, from **21 August 2025 to 27 August 2025**, to implement pavement rehabilitation works.

As such, PLUS advises heavy vehicles that exceeds the width limit to use an alternative route at nearby toll plazas either through Sedenak Toll Plaza or Senai Utara Toll Plaza during the work period.

(Please refer to the infographic as attached)

Therefore, highway users are encouraged to plan their journeys using the PLUS App to obtain the latest traffic information. They are also advised to adhere to all traffic signs and instructions issued by PLUS personnel when passing through the affected area.

All highway users can also obtain the latest traffic information through the PUTRI Virtual Assistant, X@plustraffic App, and Electronic Signboards (VMS) at selected locations as well as contact PLUSLine at 1800-88-0000 in the event of any emergencies.

-END-

MEDIA CONTACT:

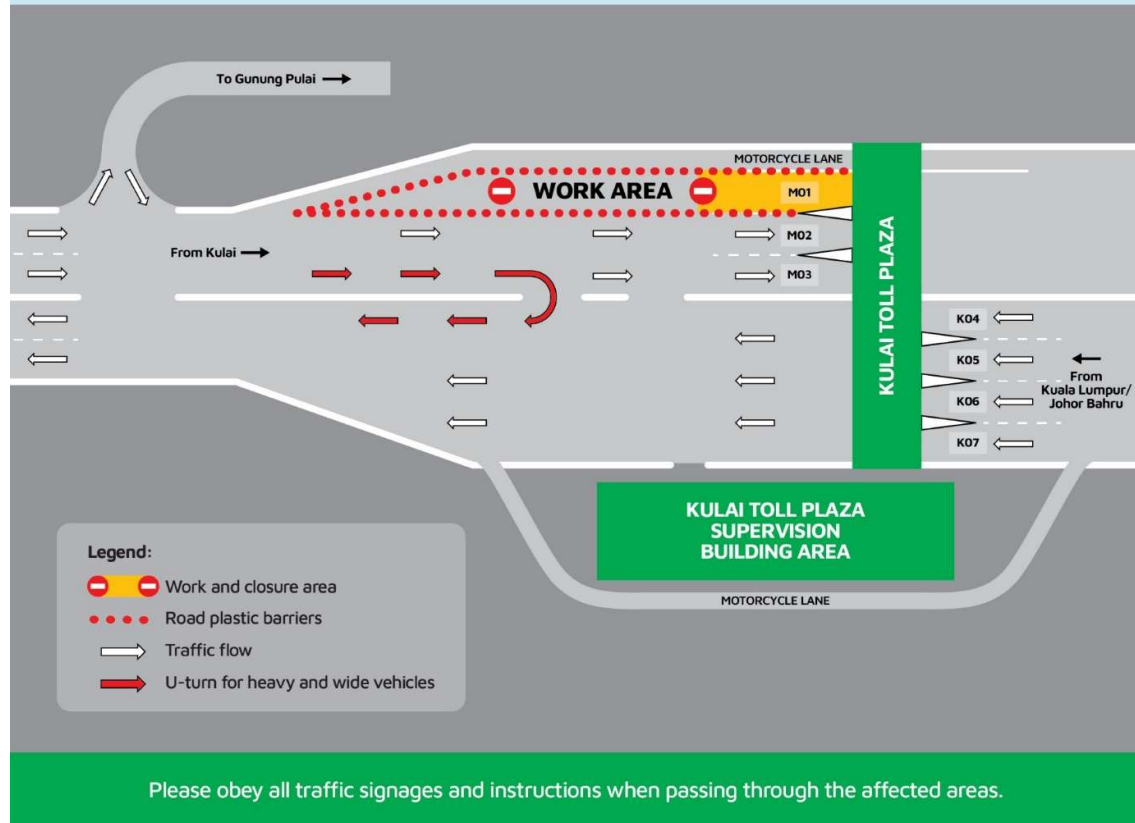
Mashitah Mohd Arshad Acting Head Corporate Communications PLUS Malaysia Berhad Mobile: 013-2097092 Email: mashitah@plus.com.my	Rofina Adam Manager Corporate Communications PLUS Malaysia Berhad Mobile: 012-657 4452 Email: rofina@plus.com.my
--	--

ATTACHEMENT

DIVERSION FOR HEAVY & WIDE VEHICLES AT KULAI TOLL PLAZA FOR PAVEMENT UPGRADING WORKS

Scheduled on 21 August until 27 August 2025

Heavy vehicles exceeding the width limit are advised to utilise alternative route



Follow us on social media



www.plus.com.my [PLUSLine 1800-88-0000](https://www.facebook.com/PLUSLine) [PLUS App](https://www.youtube.com/PLUSApp) [PUTRI](https://www.putri.com.my)



A member of UEM