

**MAINTAINANCE WORKS FOR OVERHEAD ELECTRIC LINE IN
BETWEEN SIMPANG PULAI AND GOPENG (BOTH BOUNDS) AT
KM291.50 ACROSS THE NORTH-SOUTH EXPRESSWAY**

Petaling Jaya, 29 August 2025:- PLUS Malaysia Berhad (PLUS) would like to inform that the maintenance works for overhead electric line by the Tenaga Nasional Berhad (TNB) will be conducted in between Simpang Pulai and Gopeng (Both bounds) at KM291.5 across the North-South Expressway on 3 September 2025 (Wednesday), from 12.15 am to 1.30 am.

During that period, the Simpang Pulai Lay-by (Southbound) at KM290.40 will be closed temporarily to the public. Therefore, please anticipate minor traffic disruptions at the affected area throughout the working period.

(Please refer to the Infographic attached for details)

Highway users are advised to plan their journeys during this period. They are also reminded to obey all traffic signages and follow instructions given by PLUS personnel when passing through the affected areas.

For the latest traffic updates, highway users can refer to the PLUS App, PUTRI Virtual Assistant, X @plustraffic or Electronic Signages (VMS) at selected locations. Highway users can also contact the PLUSLine at 1800-88-0000 for emergency assistance.

-END-

MEDIA CONTACT:

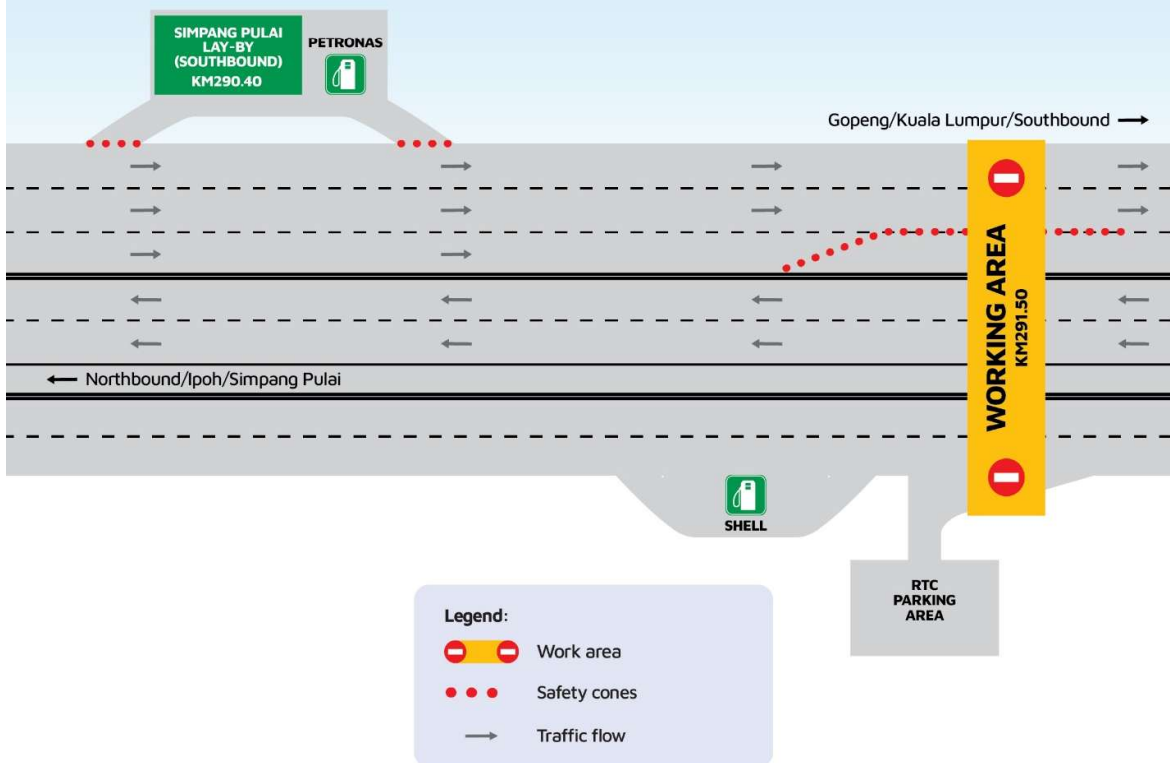
Mashitah Mohd Arshad Acting Head Corporate Communication PLUS Malaysia Berhad Mobile: 013-2097092 Email: mash itah@plus.com.my	Rofina Adam Manager Corporate Communication PLUS Malaysia Berhad Mobile: 012-657 4452 Email: rofina@plus.com.my
---	--

ATTACHMENT

MAINTENANCE WORK FOR OVERHEAD ELECTRIC LINE IN BETWEEN SIMPANG PULAI AND GOPENG (BOTH BOUNDS) AT KM291.50 ACROSS NORTH-SOUTH EXPRESSWAY

Scheduled from 3 September 2025 starting from 12.15 am to 1.30 am

Kindly anticipate minor traffic disruptions at the affected area throughout the maintenance period



Please obey all traffic signages and instructions when passing through the affected areas.

Follow us on social media



www.plus.com.my

PLUSLine 1800-88-0000

PLUS App

PUTRI



A member of UEM