

**ACTIVATION OF CONTRA FLOW BETWEEN PUTRAJAYA -  
BANDAR SAUJANA PUTRA, KM19.5-KM18.0 AND BANDAR  
SAUJANA PUTRA - PUTRAJAYA, KM18.0-KM19.5 ON THE ELITE  
HIGHWAY FOR BRIDGE CONSTRUCTION WORKS**

**Petaling Jaya, 10 February 2026:-** PLUS Malaysia Berhad (PLUS) wishes to inform that a contra flow will be activated between Putrajaya and Bandar Saujana Putra, KM19.5 to KM18.0 on 10 February to 11 February 2026 from 11.00 pm to 5.00 am and between Bandar Saujana to Putrajaya, KM18.0 to KM19.5 on 11 February to 12 February 2026 from 11.00 pm to 5.00 am on the North-South Expressway Central Link (ELITE) for bridge construction works by the appointed contractor.

**(Please refer to the attached infographic)**

Highway users are encouraged to plan their journeys during this period. They are also reminded to obey to all traffic signages and instructions issued by PLUS personnel when passing through the affected areas.

For the latest traffic updates, highway users can refer to the PLUS App, PUTRI Virtual Assistant, X@plustrafik or Electronic Signages (VMS) at selected locations. Highway users can also contact the PLUSLine at 1800-88-0000 for emergency assistance.

-END-

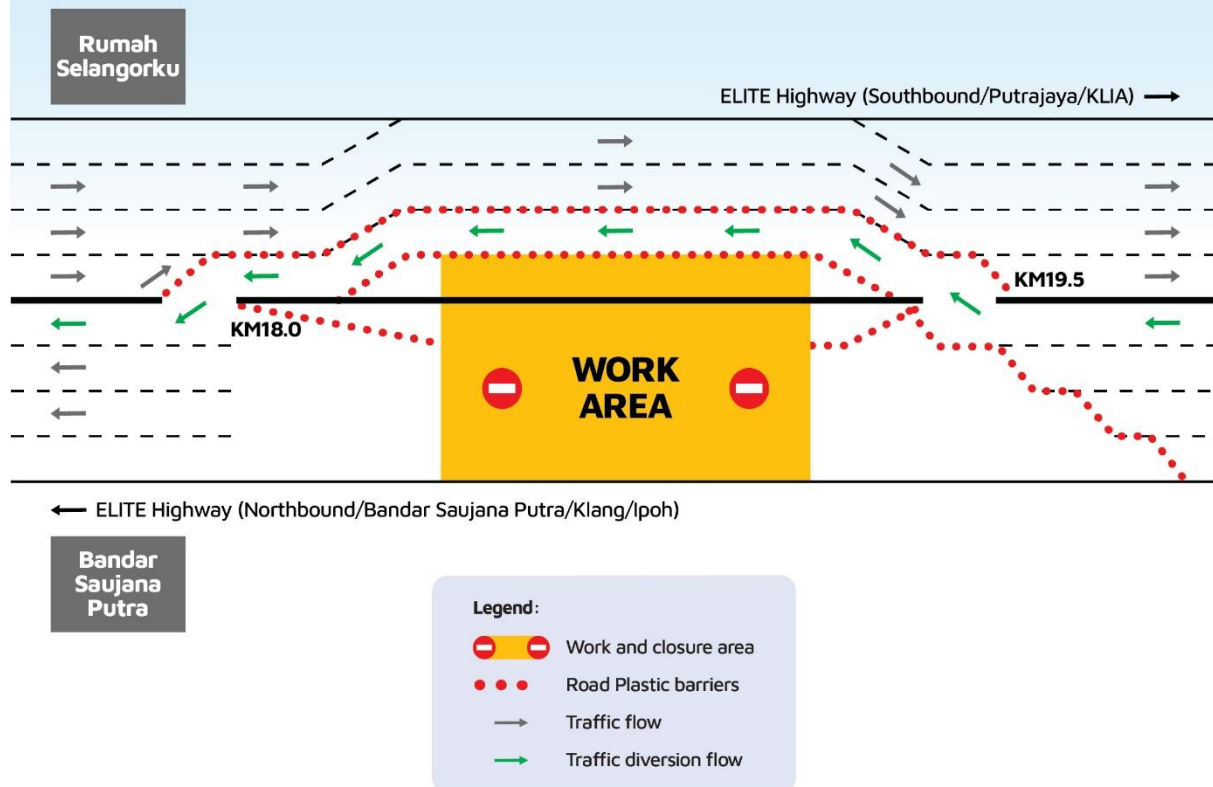
**MEDIA CONTACT:**

<b>Mashitah Mohd Arshad</b> Acting Head Corporate Communications PLUS Malaysia Berhad Mobile: 013-209 7092 Email: mashitah@plus.com.my	<b>Rofina Adam</b> Manager Corporate Communications PLUS Malaysia Berhad Mobile: 012-657 4452 Email: rofina@plus.com.my
---	--

## ATTACHMENT

### ACTIVATION OF CONTRA FLOW AT PUTRAJAYA-BANDAR SAUJANA PUTRA STRETCH, KM19.5-KM18.0 ON ELITE HIGHWAY FOR BRIDGE CONSTRUCTION WORKS

**Scheduled on 10 February - 11 February 2026,  
from 11.00 pm to 5.00 am**



Please obey all traffic signages and instructions when passing through the affected areas.

Follow us on social media

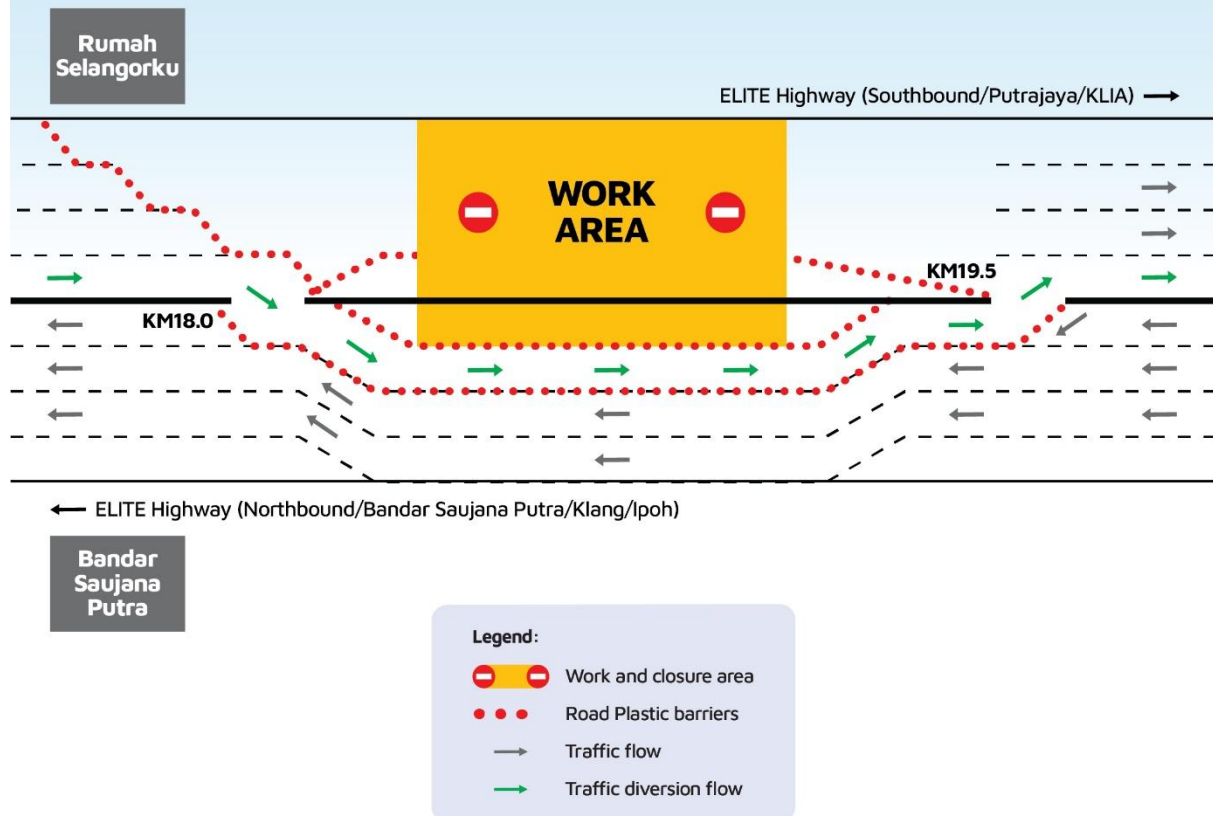


[www.plus.com.my](http://www.plus.com.my) [PLUSLine 1800-88-0000](tel:1800-88-0000) [PLUS App](#) [PUTRI](#)

## ATTACHMENT

### ACTIVATION OF CONTRA FLOW AT BANDAR SAUJANA PUTRA-PUTRAJAYA STRETCH, KM18.0-KM19.5 ON ELITE HIGHWAY FOR BRIDGE CONSTRUCTION WORKS

Scheduled on 11 February - 12 February 2026,  
from 11.00 pm to 5.00 am



Please obey all traffic signages and instructions when passing through the affected areas.

Follow us on social media



[www.plus.com.my](http://www.plus.com.my) [PLUSLine 1800-88-0000](tel:1800-88-0000) [PLUS App](#) [PUTRI](#)